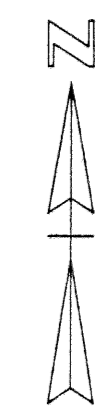
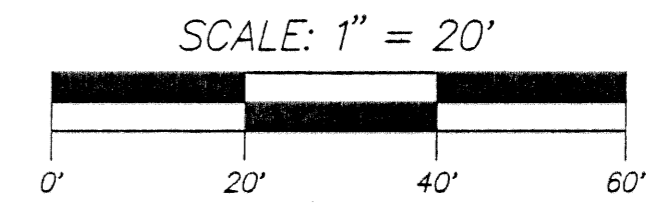


KENSINGTON PLACE, P.U.D.

BEING A PORTION OF THE SOUTHEAST QUARTER (S.E.1/4) OF SECTION 33, TOWNSHIP 45 SOUTH, RANGE 43 EAST, CITY OF BOYNTON BEACH, PALM BEACH COUNTY, FLORIDA.

OCTOBER 2002
SHEET 2 OF 2



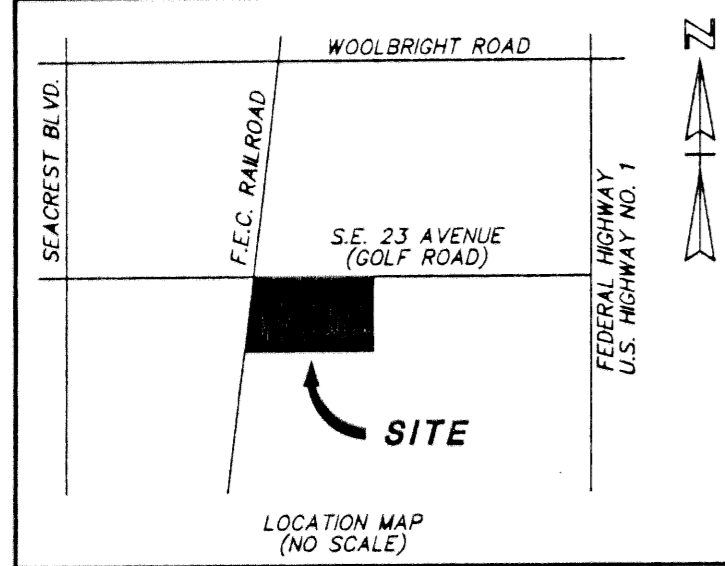
COUNTY OF PALM BEACH
STATE OF FLORIDA

THIS PLAT WAS FILED FOR RECORD AT _____
THIS _____ DAY OF _____
20____, AND DULY RECORDED IN PLAT BOOK NO. _____
ON PAGE _____
DORTHY H. WILKEN, CLERK OF CIRCUIT COURT
BY _____ D.C.

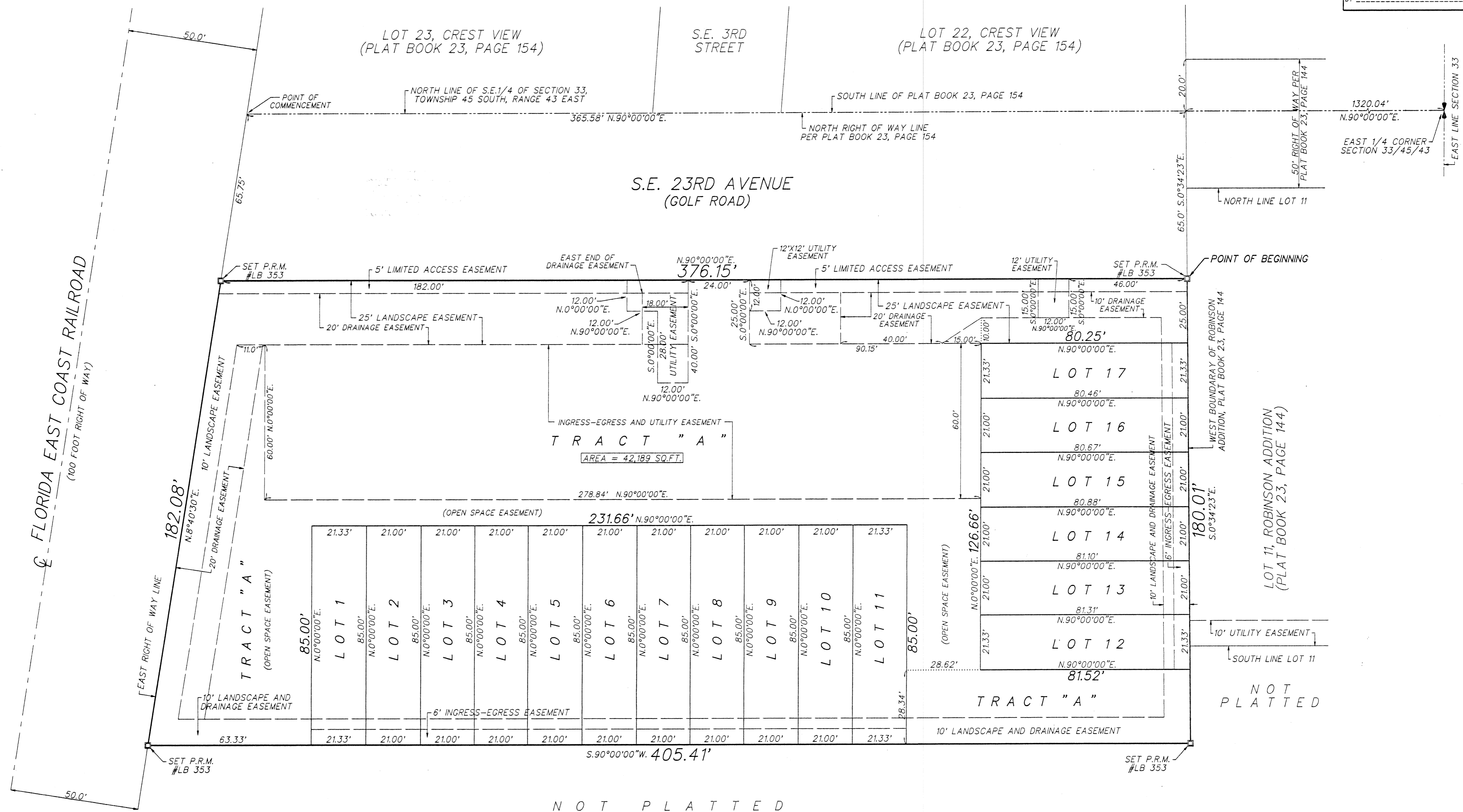
THIS INSTRUMENT WAS PREPARED BY PAUL D. ENGLE, IN THE OFFICE OF O'BRIEN, SUTER & O'BRIEN, INC., 2601 NORTH FEDERAL HIGHWAY, DELRAY BEACH, FLORIDA 33483 (561) 276-4501

LEGEND:

P.R.M. (PERMANENT REFERENCE MONUMENT) = 4"x4" CONCRETE MONUMENT STAMPED "PRM LB353"



LOT AREAS	
LOT 1	1,813 SQ.FT.
LOT 2	1,785 SQ.FT.
LOT 3	1,785 SQ.FT.
LOT 4	1,785 SQ.FT.
LOT 5	1,785 SQ.FT.
LOT 6	1,785 SQ.FT.
LOT 7	1,785 SQ.FT.
LOT 8	1,785 SQ.FT.
LOT 10	1,785 SQ.FT.
LOT 11	1,813 SQ.FT.
LOT 12	1,737 SQ.FT.
LOT 13	1,705 SQ.FT.
LOT 14	1,701 SQ.FT.
LOT 15	1,696 SQ.FT.
LOT 16	1,692 SQ.FT.
LOT 17	1,714 SQ.FT.



NOT PLATTED

O'BRIEN, SUTER & O'BRIEN, INC.
LAND SURVEYORS
CERTIFICATE OF AUTHORIZATION #LB353
SURVEYOR AND MAPPER IN RESPONSIBLE CHARGE: PAUL D. ENGLE
2601 NORTH FEDERAL HIGHWAY, DELRAY BEACH, FLORIDA 33483
(561) 276-4501 732-3279 FAX 276-2390

DATE OF SURVEY	SCALE:
FELD BOOK PAGE NO.	ORDER NO.: